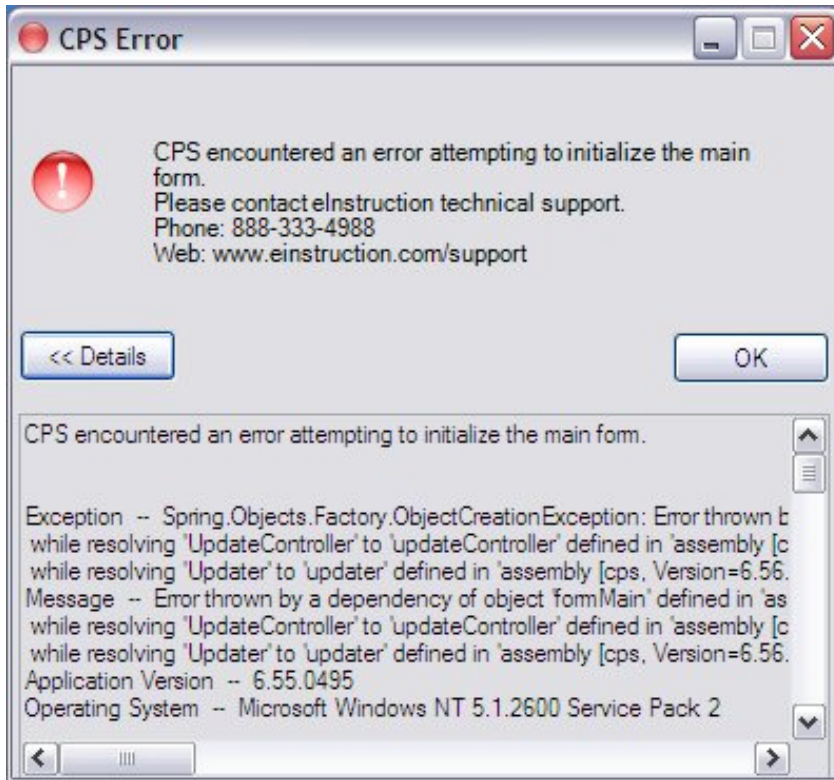


CPS Error



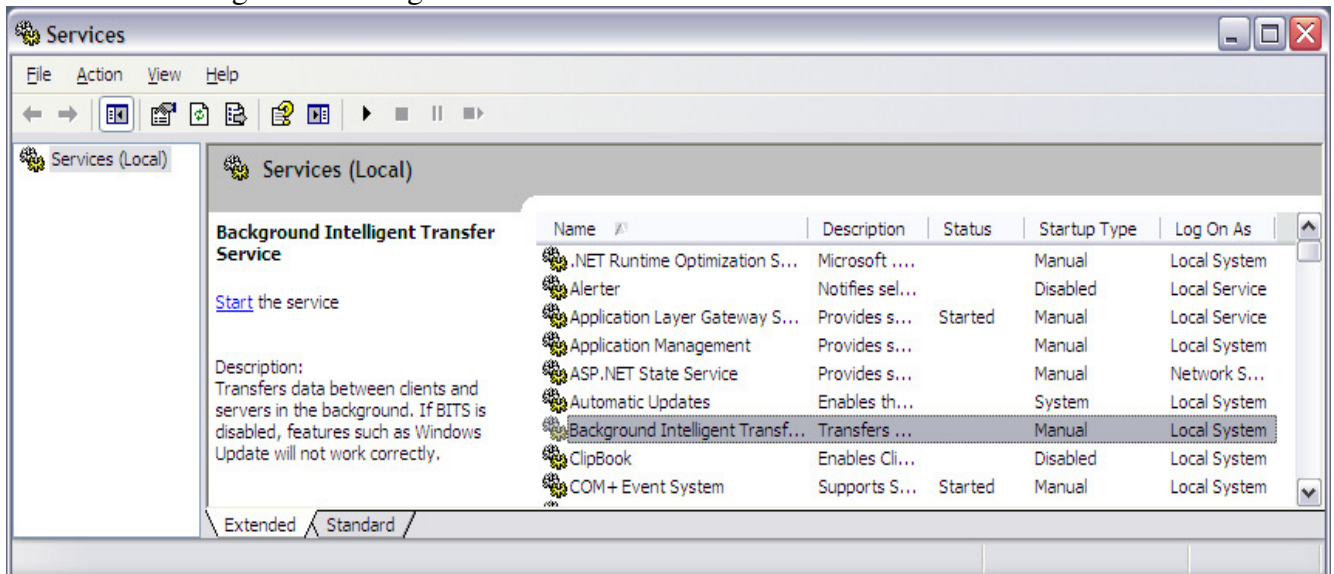
CPS error “CPS encountered an error attempting to initialize the main...”

Turn protection off and log-in.

Start → Run → Settings → Control Panel (should be in classic view)

Administrative Tools → Services →

Click on the Background Intelligent Transfer Service



Start the service, then right click on BITS and select properties → change startup to Automatic.

Thanks to Michael Pogue at Irving for finding the fix.

This setting is part of the Intelligent Classroom image and does not need to be made on these laptops.